

INSTRUCTIONS FOR PREPARING THE ARTWORK FILE

What do you need?

To prepare a compliant file that meets the print requirements, make sure you have:

1. A vector graphics software

(e.g., Adobe Illustrator, InDesign, Affinity Designer, Publisher) that supports:

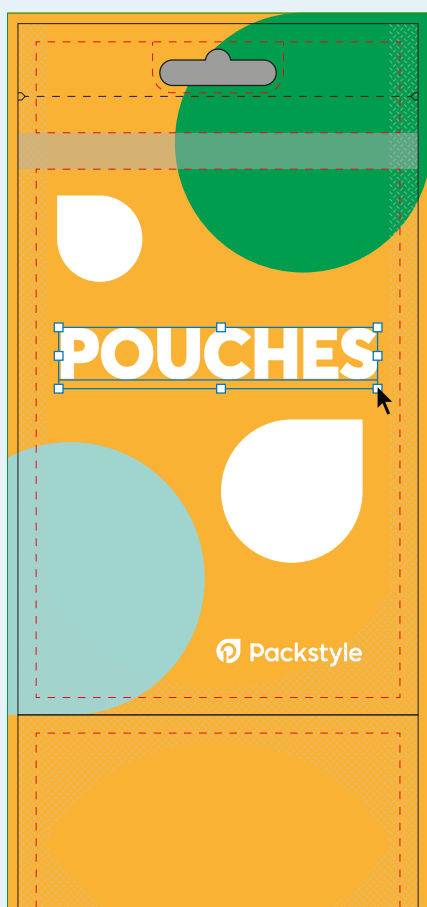
- saving in PDF/X-1a format.
- managing spot colors, if your pouch requires white ink printing.

2. Our template

Provided by us or downloaded from our website during the configuration process.

Need help?

Purchase our graphic editing or creation service!



1. USING THE TEMPLATE

Open the template file and create your artwork on the "Artwork" layer (or on new layers), using only CMYK colors and avoiding Pantone spot colors.

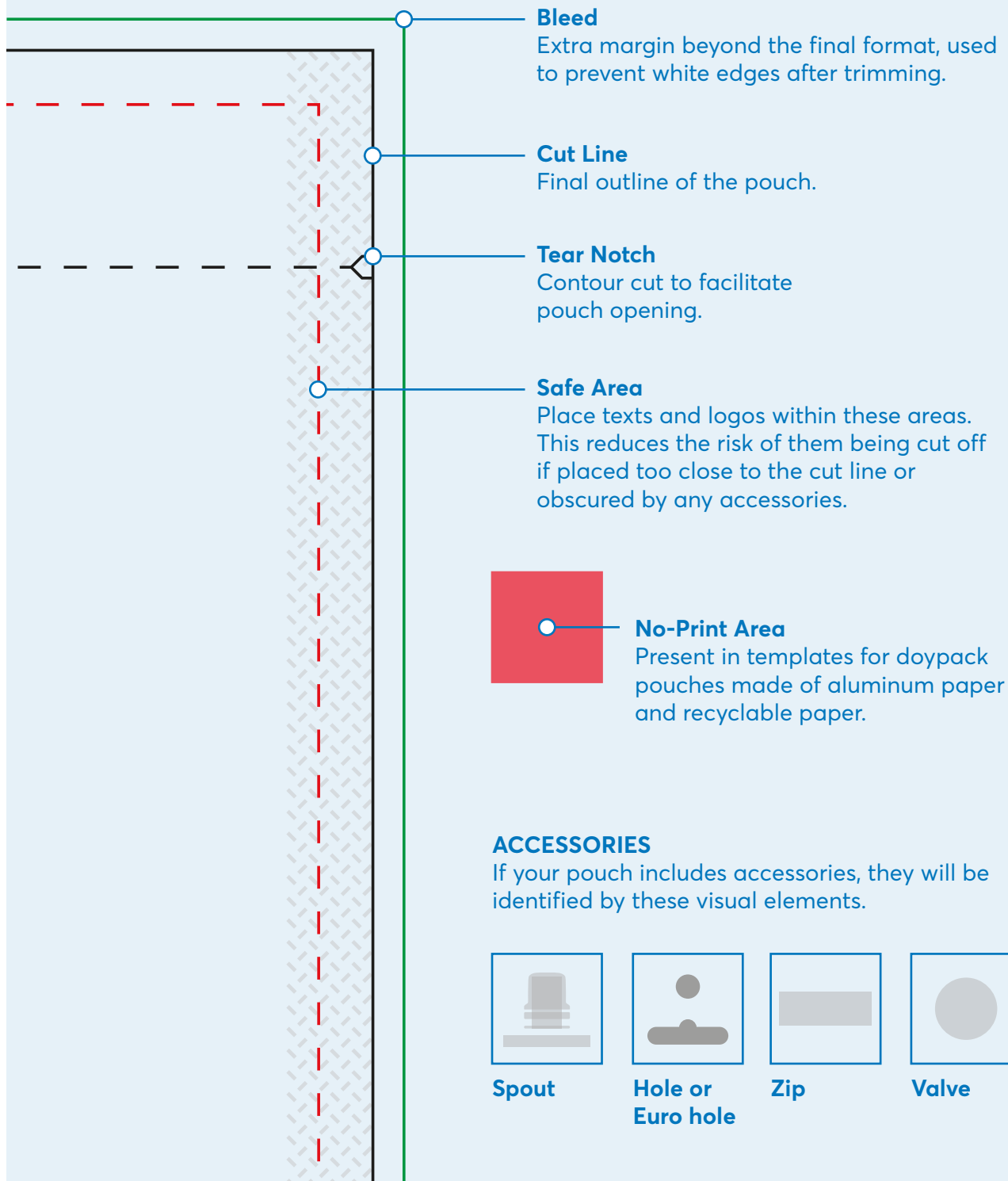
To correctly set up your file, **using the template is mandatory**. The template is designed to ensure:

- The correct dimensions, based on the selected pouch size.
- Visual references for the pouch and any configured accessories.
- Safety areas and bleed zones, essential for a proper result.

All template elements are explained in the legend on the next page.

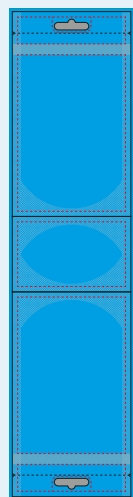
DRESSING IDEAS.

Template Legend



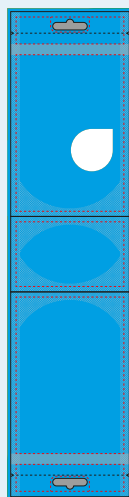
2. IS WHITE INK INCLUDED?

If your pouch is made of aluminum, metallized film, or transparent film and requires the use of white ink, it must be set up in the file according to the selected configuration.

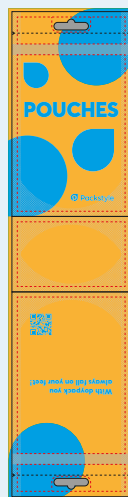


Solid white background

Draw a rectangle covering the entire area and fill it with the spot color "White" from the color swatches.*



1



2

Selective white

Draw one or more shapes on the areas where you want to apply white, using the spot color "White" from the color swatches.*

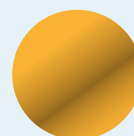


1 - Transparent Material

In the areas where the spot color "White" is not applied, do not apply any color to create a transparent window.

2 - Metalized Material

In the areas where the spot color "White" is not applied, the colors will appear metallic.



* Can't find the spot color "White" in the color swatches? Create it as follows:

Name: White

Color type: Spot Color

Values: 100% Cyan

IS WHITE INK NOT INCLUDED?

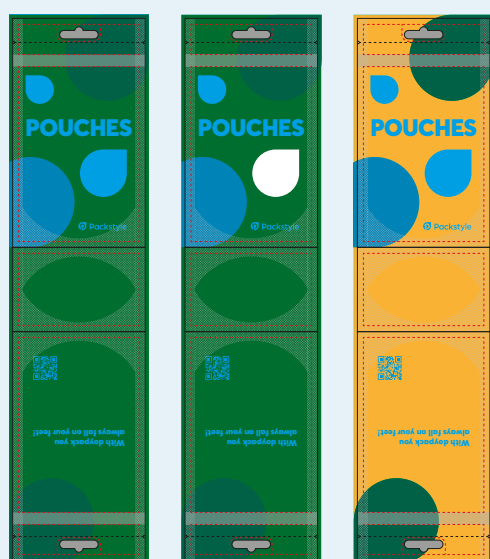
If your pouch does not require white ink (no white), proceed to step number 4 of this guide.

3. WHITE OVERPRINT

To complete the white setup, apply overprint to the rectangle or shapes you have just created.

Attributes ×	
<input checked="" type="checkbox"/>	Overprint

To verify that everything is set up correctly, enable the overprint preview. You should see the "White" color blended as shown in the examples below. In the separations list, check for the presence of all five colors.



Separations Preview ×	
<input checked="" type="checkbox"/>	Overprint Preview
<input type="checkbox"/>	Cyan
<input type="checkbox"/>	Magenta
<input type="checkbox"/>	Yellow
<input type="checkbox"/>	Black
<input type="checkbox"/>	White

Did you know...

Overprint preview can also be enabled in Acrobat Reader. Activate it in the display preferences.

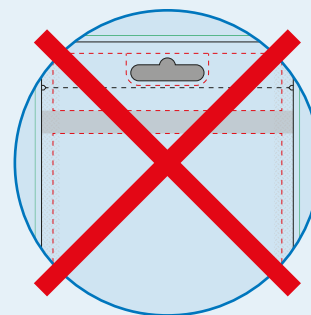
4. SAVE AS PDF/X-1a

Hide or remove the template so that it is not visible and will not be printed. Then save the file in **PDF/X-1a** format with the **Coated FOGRA39** color profile.

Warning! Save the file without crop marks.

Make sure you have correctly followed all the instructions in this guide. Packstyle's automated systems will reject graphic files that do not meet these requirements.

Have any doubts? Download the samples!
DOWNLOAD



Recommendations



Vector texts
and logos



CMYK
Color Mode



300 DPI
Images

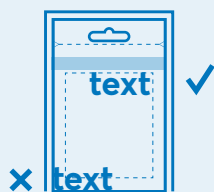


Text size
minimum 6 pt

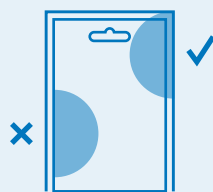


Line thickness
minimum 0.25 pt

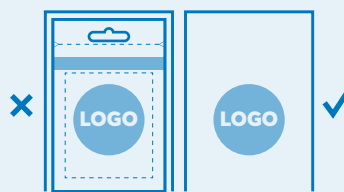
Common Mistakes



1. Text



2. Bleed



3. Template



4. White

1. Position texts within the safe area. 2. Extend your artwork to the bleed area to prevent white edges caused by possible shifting during cutting. 3. Hide or remove the template so it will not be printed. 4. If you apply a full or selective white background, make sure to use the spot color "White."

Need help?

Request graphic creation or editing services



We'll take care of everything!